



Fitting type: Inset

Sink handing: Reversible

Finish style: Brushed steel

- **Min. base unit (bowl, tap & overflow only):** 600 mm
- **Packaged size L x W x D:** 1060 x 585 x 270mm
- **Supplied boxed or sleeved:** Sleeved and boxed
- **Boxed weight:** 9.30 kg
- **Sink only weight:** 5.32 kg

- Softened square edges for a sharp but easy clean look
- Heavy brushed steel texture
- One a half bowl design for maximum practicality
- Durable stainless steel construction throughout
- Reversible drainer position for maximum flexibility

Included parts:



1 x AX1012 (α)
90mm Orbit wastes & rectangular overflow pack for 1.5 & 2.0 - short bolt



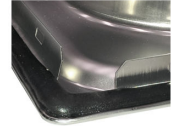
1 x AX1009 (α)
1.5 or 2.0 Bowl pipework



1 x AX4000 (α)
Fitting & care instructions & data sheet - st/st inset



1 x AX1060 (m/l)
Inset stainless steel fixing clips x 8

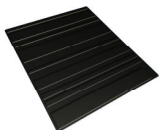


1 x AX1057 (m/l)
factory fitted rim worktop seal

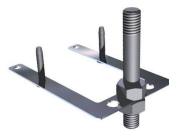


1 x AX1014 (α)
35mm tap hole cover plate - brushed steel

Recommended accessories:



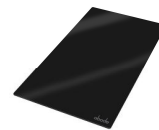
1 x AX2501
Silicone drainer mat 330 x 390mm



1 x AX1011
Tap stabilising bracket



1 x AX3011
Bowl mat 274 x 334 R5



1 x AX2013
Glass Chopping Board 500x280mm (457) - Black Gloss



1 x AX2502 or AX2503
High & Dry drainer rack - Green & grey or White & grey

All accessories can be purchased directly from www.abode-shop.co.uk or phone 01226 283434

Materials and workmanship warranty summary:

- Sink materials & workmanship 10 years.
- Waste kits 1 year.
- Connecting pipework 1 year.

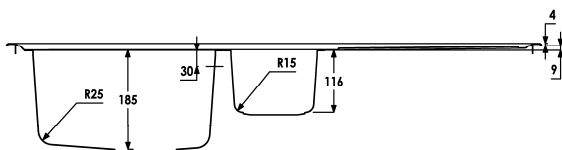
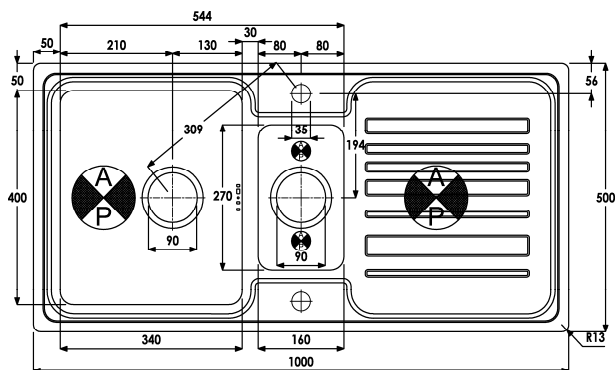
Care instructions:

- Clean the products regularly using soapy water and a non abrasive cloth, regular cleaning will prevent the build up of lime scale and dirt.
- Avoid contact with corrosive or abrasive substances.
- After cleaning rinse thoroughly with clean water then dry.
- For more detail see supplied booklet or www.abodedesigns.co.uk

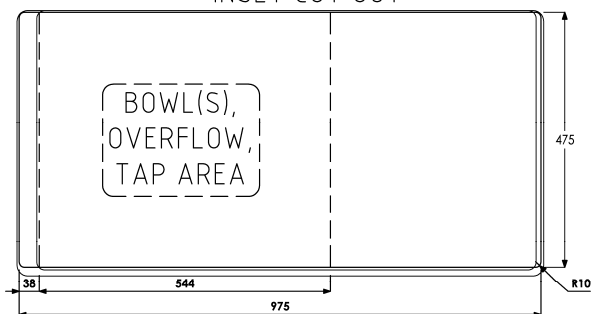
Product dimensions and installation information: note:



symbol indicates position of acoustic pad on stainless products.



INSET CUT OUT



Additional notes:

Overall product size: 1000 x 500 x 196 corner radius 13mm

Taphole(s) detail: 2 x Ø 35mm, pre-cut

Compatibility with large square taps: No known incompatibilities

Wastehole(s) detail (mm): 90 / 90 / N/A (nb. 90mm wastes accept a waste disposal unit)

Min. base unit (refers to space required for bowl, tap and overflow only): fits 600mm carcass

Min. Recessed fitting width: required (bowl(s), tap and overflow): 544mm

***Worktop cut out size:** 975x475 corner radius 10mm, for .DXF cut files please see www.abode.eu

Min. & Max worktop depth or clip depth reach range: 30 - 50mm

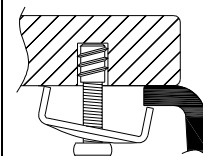
Fitting temple supplied? No, use cut out instructions as supplied

Dishwasher under drainer? Distance from top of worktop to underside of the drainer 9mm



***Important, fabricator / installer notes for undermount & flushmount sinks:**

The cut out size indicated is aligned with outside edge of the bowl top radius (see example below).



You should confirm with your client if the worksurface cutout is to be cut flush, inside or outside this suggested perimeter shape & size.

If you create the cutout smaller or larger than the indicated size then the fit of the accessories may be affected and should be physically checked.

General:

All details are provided in good faith but do not include the tolerances of the material or manufacturing process.

We request that a test cutout is made in scrap timber and checked against the actual sink to be installed before committing to cutting the final worksurface.

Abode can not accept liability for problems or costs incurred by failure to follow this request.

Note: the dimensions on ceramic fireclay products are subject to wider tolerances due to the nature of this natural material and the firing process.

CAD cutout files can be downloaded from www.abodedesigns.co.uk

Bowl details: (sizes in mm unless specified otherwise)

Bowl 1 (typically main bowl):

- Bowl 1 size L x W x D (mm):** 340 x 400 x 185
- Bowl 1 construction:** Pressed, 0.80mm
- Bowl 1 floor radius (mm):** 25
- Bowl 1 Wastehole diameter (mm):** 90
- Bowl 1 overflow:** Slotted, barcode pattern
- Bowl 1 texture:** Brushed stainless
- Bowl 1 apx. volume (litres):** 19.20

Bowl 2 (typically 1/2 or 3/4 bowl):

- Bowl 2 size L x W x D (mm):** 160 x 270 x 116
- Bowl 2 construction:** Pressed, 0.80mm
- Bowl 2 floor radius (mm):** 15
- Bowl 2 Wastehole diameter (mm):** 90
- Bowl 2 overflow:** N/A
- Bowl 2 texture:** Brushed stainless
- Bowl 2 apx. volume (litres):** 4.20

Bowl 3:

- Bowl 3 size L x W x D (mm):** N/A x N/A x N/A
- Bowl 3 construction:** N/A, N/Amm
- Bowl 3 floor radius (mm):** N/A
- Bowl 3 Wastehole diameter (mm):** N/A
- Bowl 3 overflow:** N/A
- Bowl 3 texture:** N/A
- Bowl 3 apx. volume (litres):** N/A