

Product Finish: Chrome

Product code: AT1212
EAN13 barcode: 5060048383799



Note: the image shown may not reflect the product finish, chrome finish is typically depicted.

Product features:

- Metal construction throughout
- Modern minimalism with flair
- Single lever control for effortless single handed control
- Multi spray pattern showerhead
- Supplied complete with flexible tail pipes for fast simple fitting

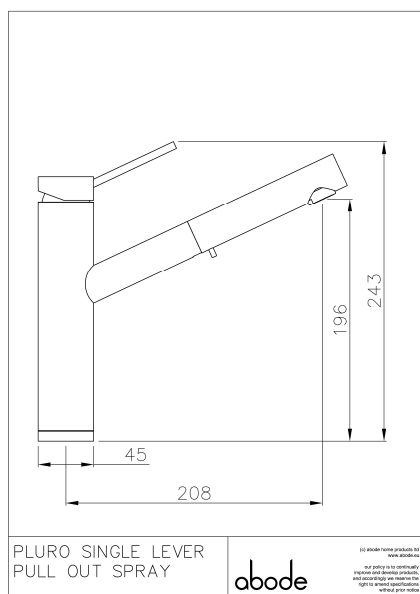
Additional information / Parts included:

The installation of this product should respect requirement IRN R090

Dual fixing studs & triangular stabiliser

180° Spout rotation

Product dimensions:



- **Overall Height / projection:** 243 mm
- **Exit reach:** 208 mm
- **Exit height:** 196 mm
- **Centre distance(s):**

- **Base diameter(s):** 45 mm
- **Recommended hole diameter:** Ø 35 mm
- **Max. surface depth:** 100 mm

- **Spout diameter:** 28 mm
- **Spout aerator size:** 20f

Packaged properties:

Box length: 430mm

Box depth: 70mm

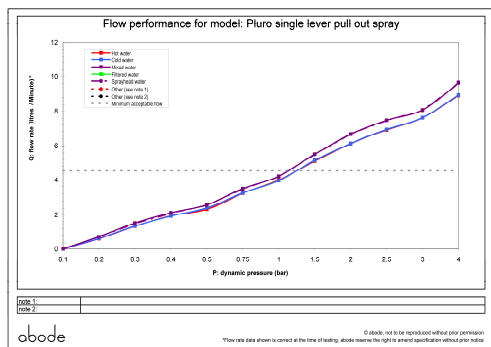
Box width: 340mm

Units per outer: 5

Tap only weight: 1.48kg

Boxed weight: 2.56kg

Product flow characteristics:



- **Min / Max water pressure:** 1.50 / 5.5 bar
- **Recommended / Max water temperature:** 46°C / 70°C
- **Part G - Mixed flow rate at 3 bar (litres / min):** 08.08

- **Control valve type:** Single lever ceramic cartridge
- **Product flow characteristics:** Single flow
- **Non return valve(s):** Hot & cold (integral to tails) & sprayhead

- **Aerator type:** Plastic mesh diffuser
- **Accepts revolve / spray areator:** No
- **Spout connection method:** N/a

- **Tail pipe inlet / outlet size:** M10 / 1/2" BSP Male
- **Inlet pipe type / length:** flexible stainless braided hose / 270 mm

Care instructions summary:

- Clean the mixers and showers regularly as required, using soap, do not use any other cleaners.
- Regular cleaning will prevent the build-up of lime scale and dirt
- After cleaning rinse thoroughly with clean water to remove any cleaner residue
- Residues of sink & worktop cleaners can also cause damage, so rinse with clean water after using, avoid contact with any abrasives

Warranty Summary (Full details available on request):

- Materials and workmanship defects warranted for 5 years
- Valves and working parts warranted for 5 years
- Surface warranty defects warranted for 1 year
- O-rings, hoses & gaskets warranted for 1 year