

**Product features:**

- Metal construction throughout
- Thermostatic valve for safety & comfort
- Supplied complete with flexible tail pipes for fast simple fitting
- Part G compliant for thermostatic bath fillers
- Factory set maximum output temperature 46°C (adjustable)

Packaged properties:

Box length (mm): 440

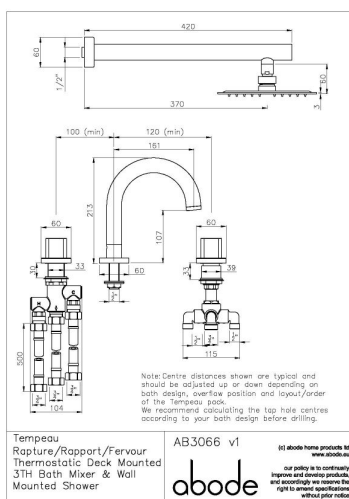
Box depth(mm): 395

Box width(mm): 255

Boxed weight (Kg): 6.8

Includes pop up waste?: No

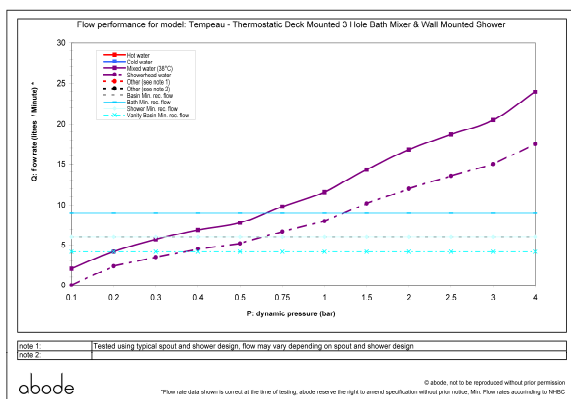
Additional comments:

Product dimensions:

- | | |
|---------------------------------------|------------------------|
| • Product mounted where: | Deck/Wall |
| • Recommended hole size: | 34-40, 22-32, 34-40 mm |
| • Overall Height / projection: | 213 mm |
| • Exit reach: | 161 mm |
| • Exit height: | 107 mm |
| • Base size: | 60, 60, 60 mm |
| • Inlet centre distance(s): | 100, 120 mm |

- **Min. fitting depth required:** n/a mm
- **Max. surface depth:** 30 mm

Product flow characteristics:



- **Min / Max water pressure (bar):** 0.60* / 5.50
*Detailed minimum pressure requirements for this product: Bath 0.6, Shower 0.6 (bar)
- **Part G max. mixed flow rate at 3 bar (l/m):** 20.5
- **Inlet connection type / length:** Flexi / 500 mm
- **Inlet (plumbing connection) / outlet size:** 1/2" M & 3/4" M / 1/2" M & 3/4" M
- **Product flow characteristics:** Single Flow
- **Non return valve(s) supplied or position:** H&C Inlet
- **Aerator type:** Flow Straightener
- **Control valve type:** Thermostatic & 180° Divertor ()
- **Includes output diverter?:** Yes
- **Inlet meshed particle filters included:** 0.60 mm

Warranty Summary (full details available on request):

- Materials and workmanship defects warranted for 5 years
- Valves and working parts warranted for 5 years
- Surface warranty defects warranted for 1 year
- O-rings, hoses & gaskets warranted for 1 year

Care instructions:

- Clean the mixers and showers regularly as required, using soap, do not use any other cleaners.
- Regular cleaning will prevent the build up of lime scale and dirt
- After cleaning rinse thoroughly with clean water to remove any cleaner residue
- Residues of liquid soaps, shampoos and shower foams can also cause damage, so rinse with clean water after using, avoid contact with any abrasives