



#### Product features:

- Metal construction throughout
- Thermostatic valve for safety & comfort
- Supplied complete with flexible tail pipes for fast simple fitting
- Part G compliant for thermostatic bath fillers
- Factory set maximum output temperature 46°C (adjustable)

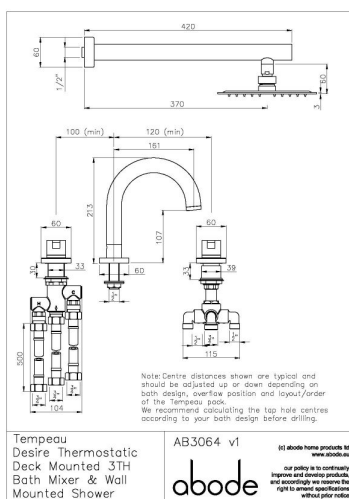
#### Packaged properties:

Box length (mm): 440      Box depth(mm): 395  
Box width(mm): 255      Boxed weight (Kg): 6.4

Includes pop up waste?: No

Additional comments:

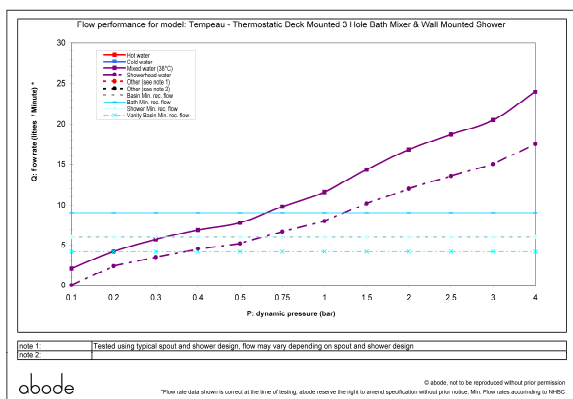
#### Product dimensions:



- Product mounted where: Deck/Wall
- Recommended hole size: 34-40, 22-32, 34-40 mm
- Overall Height / projection: 213 mm
- Exit reach: 161 mm
- Exit height: 107 mm
- Base size: 60, 60, 60 mm
- Inlet centre distance(s): 100, 120 mm

- Min. fitting depth required: n/a mm
- Max. surface depth: 30 mm

#### Product flow characteristics:



- Min / Max water pressure (bar): 0.60\* / 5.50
- \*Detailed minimum pressure requirements for this product: Bath 0.6, Shower 0.6 (bar)

- Part G max. mixed flow rate at 3 bar (l/m): 20.5

- Inlet connection type / length: Flexi / 500 mm
- Inlet (plumbing connection) / outlet size: 1/2" M & 3/4" M / 1/2" M & 3/4" M

- Product flow characteristics: Single Flow
- Non return valve(s) supplied or position: H&C Inlet

- Aerator type: Flow Straightener

- Control valve type: Thermostatic & 180° Divertor ( )
- Includes output diverter?: Yes

- Inlet meshed particle filters included: 0.60 mm

#### Warranty Summary (full details available on request):

- Materials and workmanship defects warranted for 5 years
- Valves and working parts warranted for 5 years
- Surface warranty defects warranted for 1 year
- O-rings, hoses & gaskets warranted for 1 year

#### Care instructions:

- Clean the mixers and showers regularly as required, using soap, do not use any other cleaners.
- Regular cleaning will prevent the build up of lime scale and dirt
- After cleaning rinse thoroughly with clean water to remove any cleaner residue
- Residues of liquid soaps, shampoos and shower foams can also cause damage, so rinse with clean water after using, avoid contact with any abrasives