

Wall or Ceiling Mounted Outlet

5 Year Warranty Terms & Conditions:

In the unlikely event that you should experience any defect in the materials or workmanship of your new Abode product within FIVE years of purchase, the purchaser's sole remedy shall be the replacement (at the manufacturer's discretion) of all or any part of the product that is defective. Valves are guaranteed for a period of FIVE years from purchase. Decorative surface finishes and O-rings are guaranteed for ONE year from the date of purchase provided that our advice concerning care has been observed and no scouring agents have been used.

This is provided that the product has been used for normal domestic purposes in the UK and that the care, installation and maintenance instructions have been observed. The warranty extends to the original purchaser only. You should retain a copy of your dated invoice as proof of purchase to validate any claims under this warranty.

Marks and scratches caused by improper installation or accidental damage are not covered by this guarantee. Neither are shade variations or any damage or defect caused by incorrect installation or abuse of the fitting.

As we are continuously improving and developing our products range, finishes & colours, in the event of a valid claim, we may not be able to provide an identical replacement for the defective product throughout the warranty period. Where an identical product is no longer available, we will supply the nearest equivalent from our then current product range. In assessing your claim, we must be given the opportunity to inspect the product as installed prior to removal. Any product returns must be packaged carefully as received and complete.

No other warranties, express or implied, are made, including merchantability or fitness for a particular purpose. Under no circumstances shall the manufacturer be liable for any loss or damage arising from the purchase, use or inability to use this product, or for any special, indirect, incidental or consequential damages. No liability is accepted for consequential damage to other household fixtures, fittings or furnishings arising from this claim, even if attached to the product. No installer, dealer, agent or employee of Abode has the authority to modify the obligations or limitations of this warranty.

Product Care Instructions:

To maintain the appearance of this product, ensure that it is regularly cleaned only using a clean, soft damp cloth. A solution of warm water and a mild liquid detergent may be used where necessary, and then the fitting rinsed thoroughly and wiped dry. Any other cleaning action or cleaning products will invalidate your warranty.

Abrasive cleaners, scouring cleaners, limescale cleaners and acidic cleaners **must not be used** under any circumstances. Avoid contact with all solvents (including chlorinated solvents, ketones or acetones as these may result in surface deterioration or etching). Also avoid contact with any harsh household chemicals such as bleach cleaners, drain cleaners, rust removers, paint strippers and toilet bowl cleaners, toothpaste, mouthwash, bar keepers friend or Brasso.

The logo for Abode, featuring the word "abode" in a lowercase, sans-serif font. The letter 'a' is stylized with a vertical line extending upwards from its top.

Please leave these instructions for your customer.

Installation Preparation:

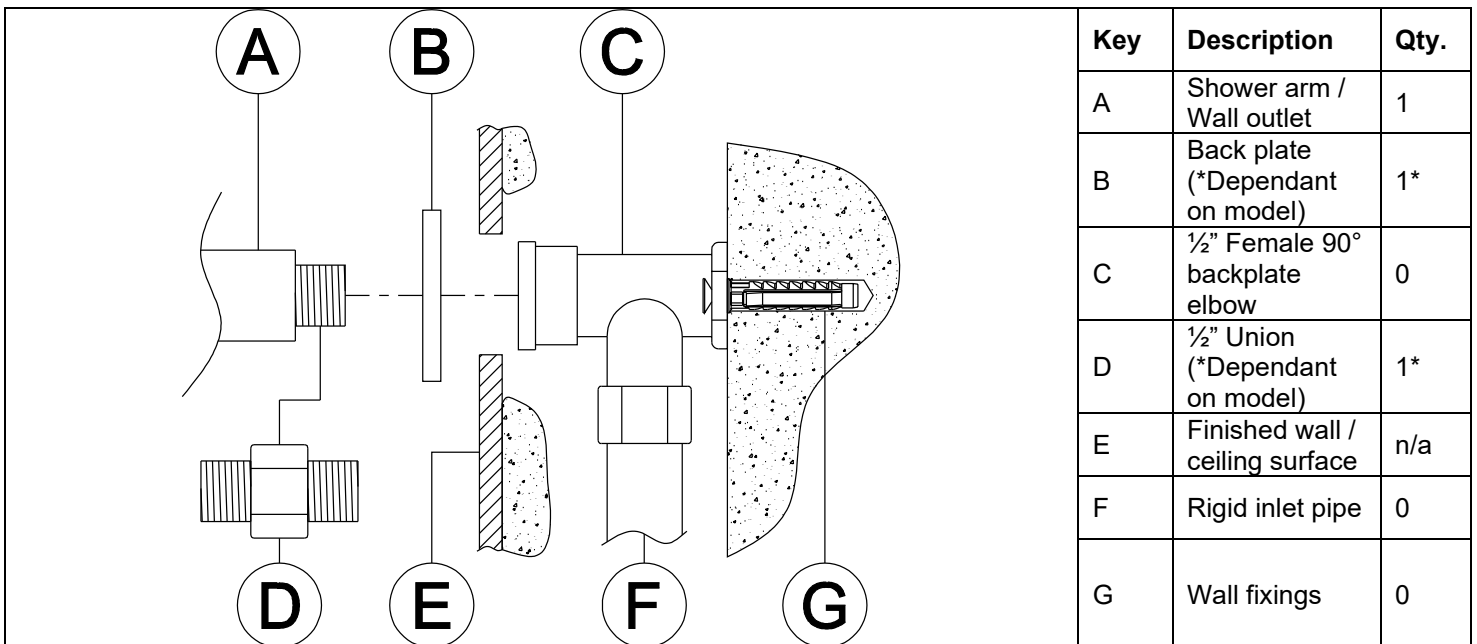
All parts should be removed from their packaging and inspected for any transport damage and completeness prior to installation; you should read these instructions throughout before commencing installation.

We do not accept responsibility for problems that may occur through improper installation. Always ensure you have sufficient hot and cold water pressure available to allow correct function before specifying or installing this product.

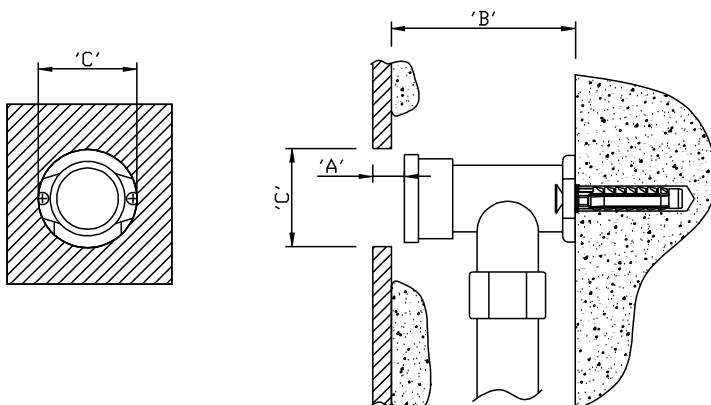
We strongly recommend installing particle filters and isolation valves to both the hot and cold feed pipes in an accessible position. This will help to prevent premature failure of the valves and ease any future maintenance.

Shut off your water heating system and ensure that your mains stopcock is closed. Ensure both the hot and cold water supplies are isolated before commencing installation.

Installation:



- Open the wall / ceiling out to the required width and depth for supply pipes (F) and elbow (C).
 - All serviceable parts should be given suitable access to allow easy future maintenance.
 - You should ensure that both the product and required fittings will fit into the depth and area of the mounting surface available before installation. Roughly assemble the product and plumbing connections (example 1/2" union (D) to establish the required sizes 'A-C'.



'A'	Distance from finished surface to fixed connector
'B'	Cavity depth for supply pipes and fixings
'C'	Finished hole diameter

2. Fix elbow (C) or inlet pipes (F) **securely** to the wall or ceiling using appropriate fixings (G). Note these fixings should be secure enough to support the attached products weight safely during use.
 - Before installing this new connection **it is essential that you thoroughly flush through the supply pipes** in order to remove any remaining solder, swarf or impurities from your system. Failure to carry out this simple procedure could cause problems or damage to the workings of any attached product and invalidate the warranty.
3. If the shower arm / wall outlet (A) has a ½” Female connection then screw an appropriate sized ½” Union (D) into ½” elbow (C) to suit the fitting depth and the shower arm / wall outlet (A) connection size using PTFE tape or sealing compound to ensure a water tight connection, cap off the incoming pipework and pressure test it for leaks, if tested ok remove the testing cap but cover it temporarily with a cloth to prevent dirt entering the supply feed.
4. Make good the finished surface (E) using tiles or similar, now prepare hole ‘D’ in the tiles. Ensure back plate (B) will cover the finished hole diameter ‘C’.
5. If applicable put back plate (B) over the shower arm / wall outlet (A).
6. Screw the shower arm / wall outlet (A) into the elbow (C) or ½” Union (D) using PTFE tape or sealing compound to ensure a water tight connection and the body of the outlet (A) faces the correct direction. Test the water tightness of all inlet pipes and connections before progressing with the installation.
7. Watchfully Seal around the finished wall surface (E) and back plate (B) if applicable to prevent water ingress into the wall. Note take care not to apply sealant to sections of thread on the shower arm / wall outlet (A) or ½” Union (D) that are required for fixing later.

After installation:

Once you have visually checked the installation of the new product and all connections, ensure that all other fittings are closed except the new product which should be left open.

Turn on your water heating system and ensure that your mains stopcock is open. Reconnect both the hot and cold water supplies to this fitting.

Check the function of flow and function of hot, cold and mixed water, where possible check the function of the thermostatic valve maximum temperature, and shut off function by interrupting the cold water source during use.

Turn off the product and check carefully for any leaks around all connections on the fitting and adjoining plumbing. If possible return to the installation after a longer period to double check for slower leaks. If pressure testing equipment is available check the installation to the maximum recommended pressure.

Clean the product to remove any marks created during installation as instructed, and then place a bag over the product to protect the product finish until it is ready for use.

Important Technical Data:

- Minimum operating pressure: only applicable to models supplied with shower head, check you have sufficient water pressure for the model you are installing at www.abodedesigns.co.uk before installation.
- Maximum operating pressure 5 bar*

*Note: If this pressure is exceeded, even for short periods, damage can result. In these instances a pressure reducing valve should be installed

For safety purposes do not use any products as a grab or support rail

All Abode products are either WRAS approved or manufactured in accordance with recognised European standards. Please ensure that your Abode product is fitted in accordance with Local Water Byelaws.

Whilst assembling this product take care not to accidentally loosen any screwed assemblies. PTFE tape can be used to ensure watertight joins on threaded connections, do not over tighten connections or allow pipes to be twisted or folded.

The installation should be periodically checked for damage, if the property is left unattended for a prolonged period we recommend isolating water supplies.

All errors and omissions excepted.

abode

Unit L, Zenith Park, Whaley Road, Barnsley, S75 1HT.

Tel: 01226 283434 Fax: 01226 282434

Manufacturers Reference

©Abode 04/2020

www.abodedesigns.co.uk